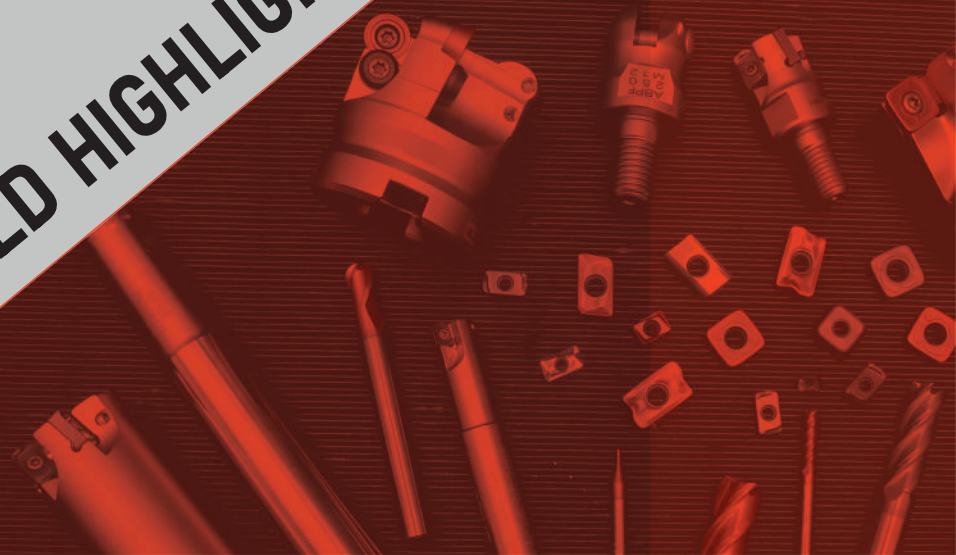


Innovative Solutions
Indian Values



DIE & MOULD HIGHLIGHTS

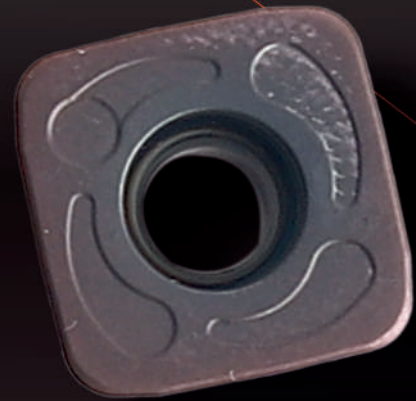


HIFEED

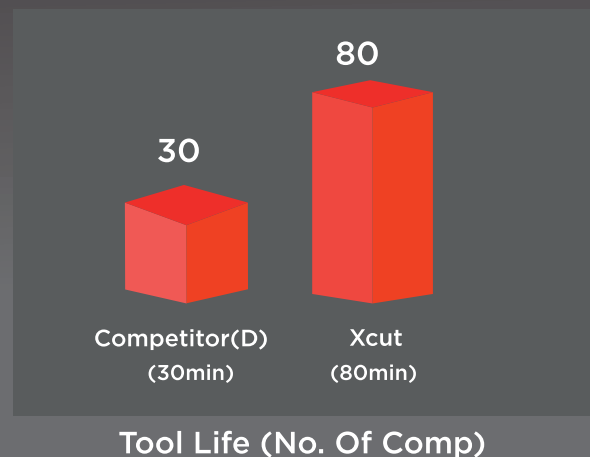
SDKW13

Features

- 4 Corners Hi Feed Insert
- Capable to take MAX DOC up to 1.5mm
- Cutter Diameter Range 50/52/63/80/100/125
- Reduces Cycle Time with higher feed
- XT930-C → Works good for Pre-Hardened moulds.
- XT-1010 → Right recommendation for Hardened and Exotics and Welded Dies



SDKW13		
Product Description	SDKW-130420-HF-XT1010	
Material & Hardness	DB6 (Welded Material) 50-55 HRC	
Parameters	Competitor (D)	XCUT
Depth of Cut	0.3	0.3
Vc: m/min	150	117
Fz: mm/tooth	0.6	0.8
Life increases by 121%		

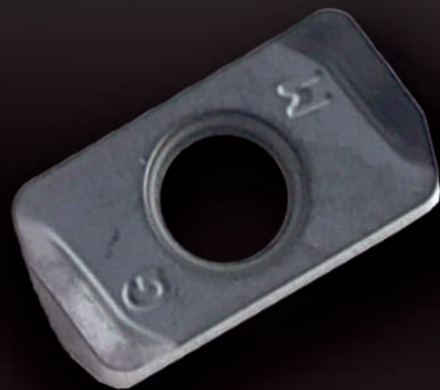


HIFEED

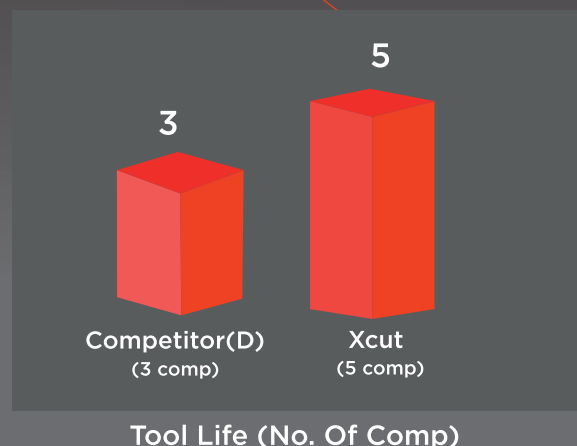
XOGU11

Features

- 4 corner Rectangular Insert
- HI Feed Solutions for Roughing, Semi finishing in Dia 16/20/25/32
- Good chip evacuation prevents Chip-Biting enabling smooth operation.
- Periphery ground inserts capable for High Efficiency Machining.
- Also Available with Modular Heads.
- Specific Inserts Grades Below:
 - XT930-C → Works fine for SS Material and Forging Steel.
 - XT-1010 → Recommended for Exotics, High Hard and Welded Dies.



XOGU11		
Product Description	XOGU110310-HF-XT930-C	
Material & Hardness	6A, Plate & 32 HRC	
Parameters	Competitor (D)	XCUT
Depth of Cut	0.5mm	0.7mm
Vc: m/min	79	59
Fz: mm/tooth	0.4	0.4
Life increases by 60%		



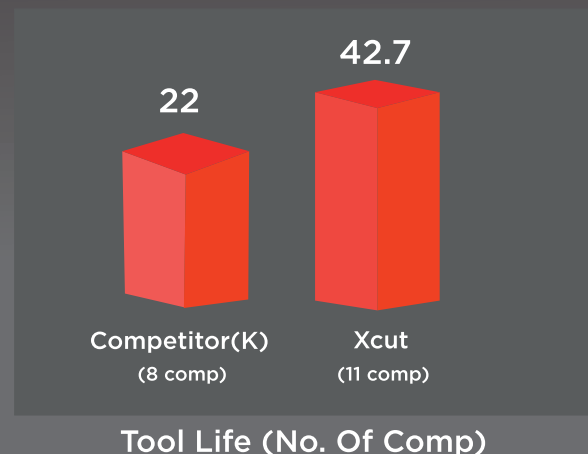
SHOULDER MILLING - XDMT Series

Features

- 2 corner True 90 Degree End mill and Face Mill inserts with of sizes 11 & 17
- XDMT 11 Exclusively suitable for Finish Milling in Dia 16/20/25/32
- Also available in Modular Heads
- Available in Corner Radius 0.8/1.6 (0.4/1.2 CR) to be Available Soon
- Effective on Die & Mould as well as General Engineering
- XDMT available in (0.8/1.6/2.4 R) CR
- Available from Dia 32, 40, 50, 63, 80, 100
- Specific Inserts Grades Below:
 - XT930-C → Recommended for SS Material and Alloys
 - XT-960 → Recommended for Hardened, Super Hard Dies and Exotics.



Shoulder Milling (XDMT)		
Product Description	XDMT11T316ER-JT XT960	
Material & Hardness	2316 High Hard / 30-42 HRC	
Parameters	Competitor (K)	XCUT
Depth of Cut	0.38-0.5	0.38-0.5
Vc: m/min	113	113
Fz: mm/tooth	0.45	0.45
Improved Productivity by 48%		



APMT/APKT/AOMT

Features

- 90 Degree Approach Angle Insert
- 2 Corner insert Suitable for Pocketing, Side Milling, Facing (Roughing and Semi finishing)
- Diameter Range 16/20/25/32 in Cylindrical Shank
- Available in Dia 40/50/63/80 in Shell Mill.
- popular grades are XT125 / XT830

COPY MILLING

Features

- 0 Degree Approach Angle Insert
- 6 corner Insert Suitable for Pocketing, Copy Milling and Surfacing.
- Good chip evacuation prevents Chip-Biting enabling smooth operation.
- Robust for heavy roughing specially in Die and Mold and General Engineering Industries.
- Available in R5 and R6 (10MM AND 12MM INSERT)
- Popular grades are XT125 & XT930-C

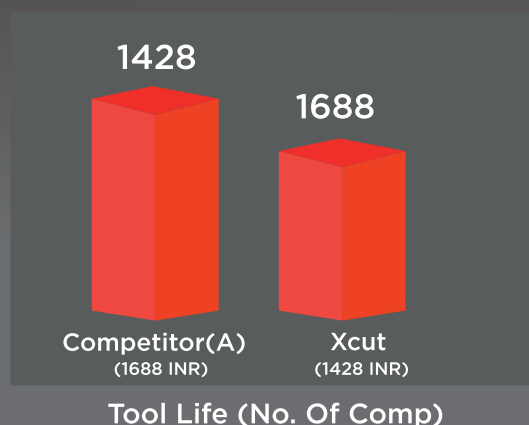
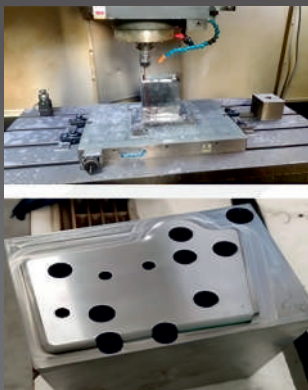
SOLID CARBIDE

Features

- XCUT covers Finishing Line in Solid Carbide End mill and Ball cutters.
- Wide range in 2F,4F, Multi- Flutes, RIB Type in End mill and Ball cutters.
- Grades Suitable to machine material up to 65 HRC
Below are the Grades:
- DH-S Series: Suitable to machine material up to 50-58 HRC
- DH-P Series: Suitable to machine material up to 58-65 HRC
- DH Series: Suitable to machine material up to 35-45 HRC
- DM Series: Machining material up to 35 HRC, that includes steel, soft steel.



Solid Carbide (EM10N4DH)		
Product Description	EM10N4DH	
Material & Hardness	Dievar & 53 HRC	
Parameters	Competitor (D)	XCUT
Depth of Cut	0.1	0.1
Vc: m/min	125	100
Fz: mm/tooth	0.21	0.26
Life increases by 22%		

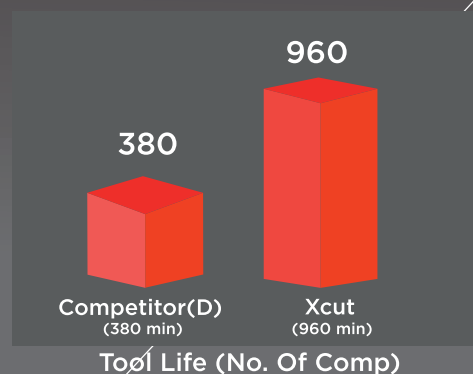


X-FIN

Features

- Used in Die and Mold Industry for 3-D Finishing (Profile, Cavity, Helical Milling)
- Available in Dia 10/12/16/20/25/30/32
- Excellent Surface Finish and Stable Machining due to secure clamping and minimum runout.
- High Accuracy of R Shape (Ball Shape: +/-0.01/Corner R shape: +/-0.015)
- Below Grade Available:
 - DH-S: Grade applicable for High-Speed steel and Continuous machining of soft pre-hardened steels and stainless steels (Mold, Press) up to 52 HRC
 - DH-P: Grade applicable for high speed and continuous machining of High Hardness heat treated steel (Mold, Press) above 52 HRC. High- Hardness exclusive insert coating to prevent tool defects and improve tool life.

Finish Milling XFIN (XHBR250-R1.0-DH-S)		
Product Description	XHBR250-R1.0-DH-S	
Material & Hardness	P20 2316 HH	
Parameters	Competitor (D)	XCUT
Depth of Cut	0.15	0.15
Vc: m/min	353	392
Fz: mm/tooth	2500	2500
Life increases by 150%		



MODULAR HEADS

Features

- XCUT Introduces New Exchangeable Heads in Finish Milling
- Modular heads, and Extensions in Solid Carbide and Steel.
- Covers Hi Feed (XOGU)
Diameter Range 16/20/25/32
- Covers Shoulder Milling (XDMT)
Diameter Range 16/20/25/32
- Covers X Fin Line (finishing)
Diameter range 10/12/16/20/25/30/32
Same heads for the ball and the radius inserts!
- Carbide shanks also available extremely useful for deep cavity finishing
- Range as below
 - D10 (OAL 100mm, 150mm)
 - D12 (OAL 150mm, 200mm)
 - D16 (OAL 150mm, 200mm, 250mm)
 - D20 (OAL 150mm, 200mm, 250mm, 300mm)
 - D25 (OAL 150mm, 200mm, 250mm, 300mm)



BY
XCEED
Toolings Pvt. Ltd.

Plot No. 8, Ground Floor, Gyan Bhavan, Kumta Street, Ballard Estate,
Mumbai - 400001. Maharashtra, India
Tel. no.: +91-8879640290 E-mail: contact@xceedgroup.in Website: www.xcut.in

OUR NETWORK

• AHMEDABAD • AURANGABAD • BENGALURU • CHENNAI • COIMBATORE • DELHI
• DUBAI • INDORE • KOLHAPUR • MUMBAI* • PUNE • RAJKOT • BARODA • BELGAUM • HYDERABAD
• HOSUR • NAGPUR • NASHIK • SURAT • RAIPUR • KOLKATA • JAMSHEDPUR