



Innovative solutions  
Indian values



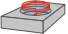
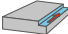




# LNKU12



# LNKU OVERVIEW

## Application

- |  |  |
|--|--|
| 1. Face milling<br>     | 2. Angled milling<br>   |
| 3. Helical plunging<br> | 4. Shoulder milling<br> |
| 5. Slot plunging<br>    | 6. Pocket milling<br>   |

## Customer benefits

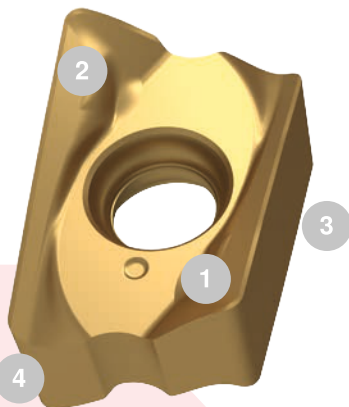
- High precision 90° milling
- Low power consumption, maximum chip removal rate
- Chipbreaker optimised by FEM
- Soft cutting providing quiet machining and maximum spindle protection

## Chipbreaker

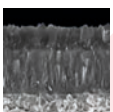
**HP:** Steel – Cast iron\*

**SM:** Stainless Steel – Exotic\* – Titanium\*

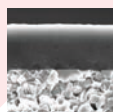
### 4 effective cutting edges



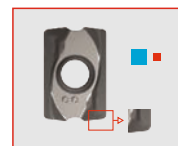
XT840 



XT930 

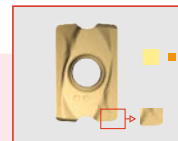


### Which chipbreaker to use?



#### HP


Strong cutting edge for general steel applications and hard conditions milling.





#### SM

Sharp cutting edge for general stainless steel applications and for finishing in steels.

# LNKU OVERVIEW

Insert	Designation	Chipbreaker	Available
	LNKU120608HP-XT840	HP	•
	LNKU120608SM-XT930	SM	•

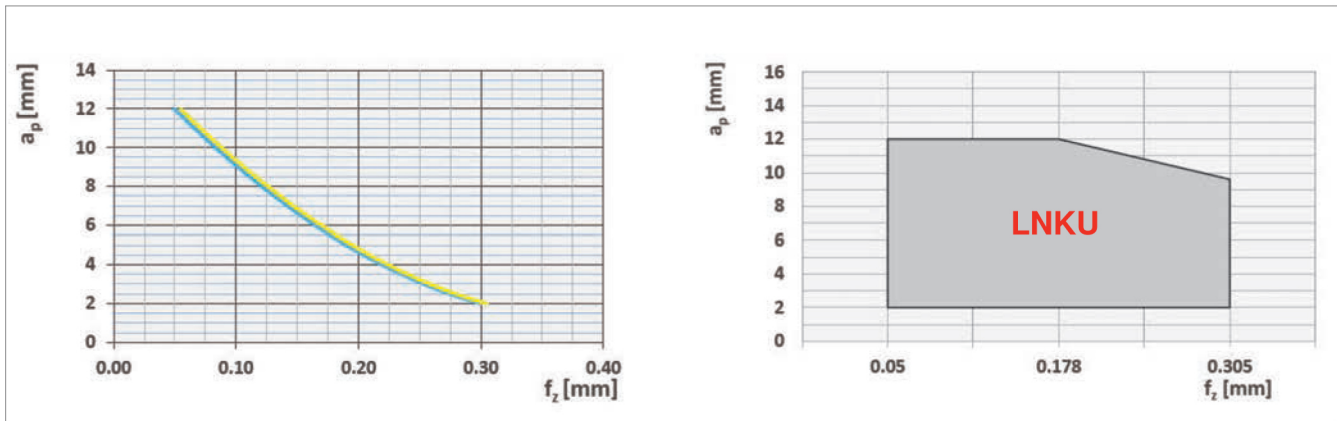
Body	Designation	Milling cutter (mm)	Z	Available
	XTEM-D25-Z2-200-LNKU12	25	2	•
	XTEM-D32-Z3-200-LNKU12	32	3	•
	* XTSM-D40-A16-Z4-LNKU12	40	4	•
	* XTSM-D50-A22-Z5-LNKU12	50	5	•
	* XTSM-D63-A22-Z6-LNKU12	63	6	•
	* XTSM-D80-A27-Z7-LNKU12	80	7	•

Spare parts	Designation	Torque moment (Nm)	Available
	Screw M4.0 x 11 - T15	5	•

**Note\*** through coolant cutter available on request

# LNKU CUTTING DATA

## Starting parameters:



## Grade and material:

## Cutting data

Material Group	Chipbreaker	Grade	$v_c$ [m/min]	$f_z$ [mm]	$a_p$ [mm]
<b>P</b> Steel	HP	XT840 XT930	220-60	0.05-0.30	6-2.0
<b>M</b> Stainless Steel	SM	XT930	200-60	0.05-0.30	6-2.0
<b>K</b> Cast Iron	HP	XT840	200-60	0.05-0.30	6-2.0

AUTHORISED DEALER